

# IDENTIFY THE ODD ONE OUT!

There is one odd marine creature in each of these groups. Find which ones they are, and why!

1)



Shark



Clownfish



Oera



Barracuda

2)



Goldfish



Lionfish



Clownfish



Blue Tang

3)



Crab



Octopus



Sea horse



Starfish

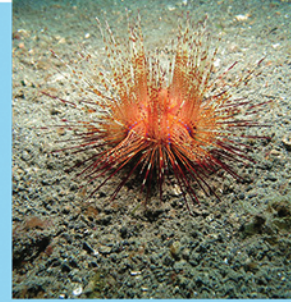
4)



Sting ray



Jellyfish



Sea urchin



Turtle

Answers:  
 1) B - A Clownfish is not a large predator 2) A - A goldfish is a saltwater fish, the others are freshwater fish  
 3) C - A sea horse can't regenerate body parts 4) D - Turtles don't sting