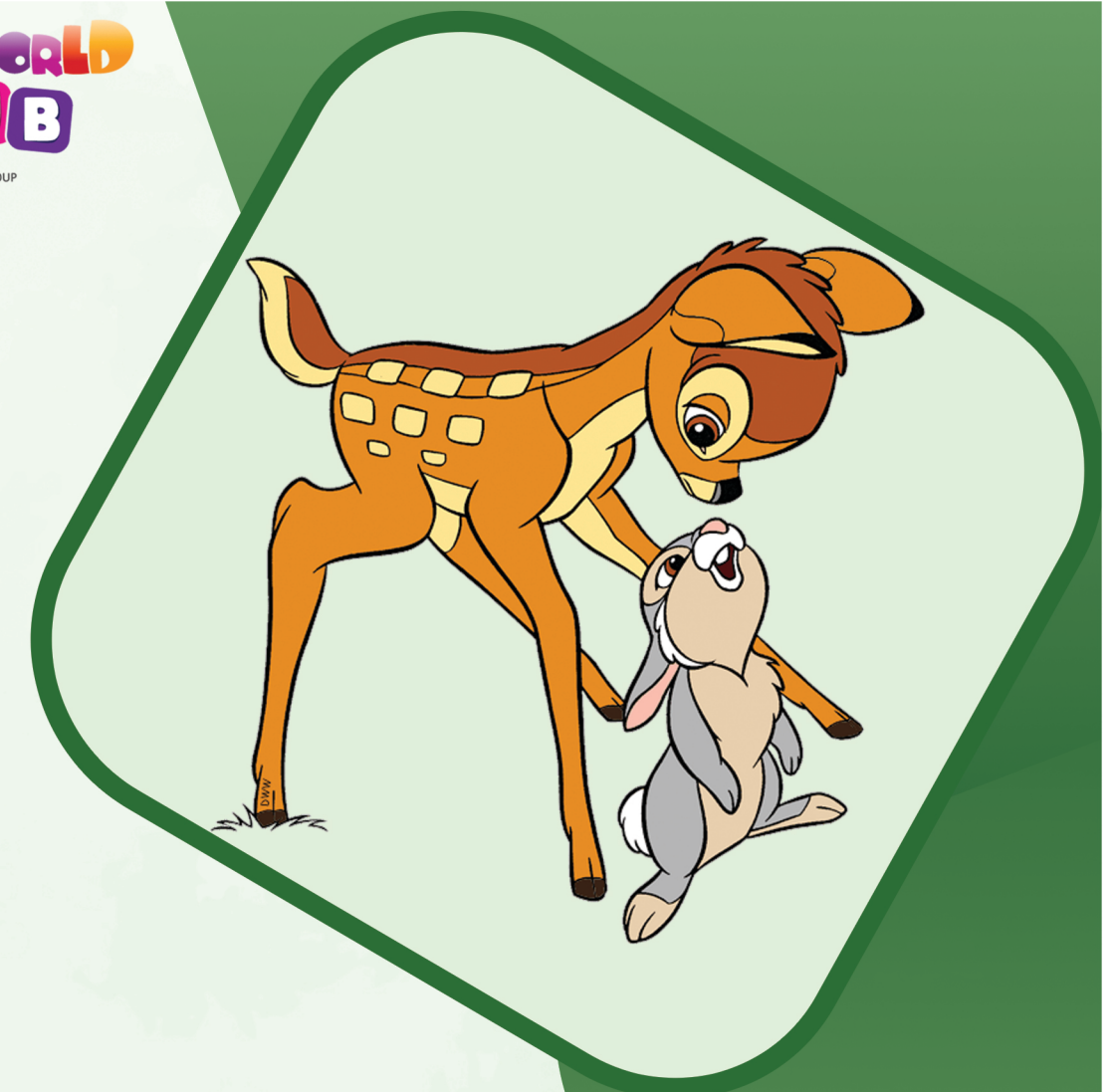


SUNDAY	MONDAY	TUESDAY	WEDNESDAY	THURSDAY	FRIDAY	SATURDAY
		01	02	03	04	05
06	07	08	09	10	11	12
13	14	15	16	17	18	19
20	21	22	23	24	25	26
27	28	29	30	31		



CHARACTERS IN THE SPOTLIGHT : BAMBI AND THUMPER

HOW THEY MET : BAMBI, WHO IS STILL LEARNING ABOUT THE WORLD AROUND HIM, COMES ACROSS A LIVELY AND MISCHIEVOUS RABBIT NAMED THUMPER WHILE HE IS CAUTIOUSLY EXPLORING THE FOREST. INITIALLY SKEPTICAL OF THE YOUNG DEER, THUMPER EVENTUALLY WARMS UP TO HIM.

SPECIAL MOMENT : AS THE FOREST IS COVERED BY SNOW, BAMBI STRUGGLES TO KEEP HIS BALANCE ON THE SLIPPERY SURFACE. THUMPER COMES TO BAMBI'S AID AND TEACHES HIM HOW TO NAVIGATE THE ICY TERRAIN.

CHARACTER QUIRKS : THUMPER'S SHARP WIT AND FUNNY ONE-LINERS MAKE HIM A FAN FAVORITE. BAMBI'S CURIOSITY FUELS HIS ADVENTURES AND ENABLES HIM DISCOVER NEW EXPERIENCES AND FRIENDSHIPS.

QUOTABLE QUOTES : "IF YOU CAN'T SAY SOMETHING NICE, DON'T SAY NOTHING AT ALL."

